



## Overview

# Kam Kiu Aluminium Products Group Limited

# Content

---



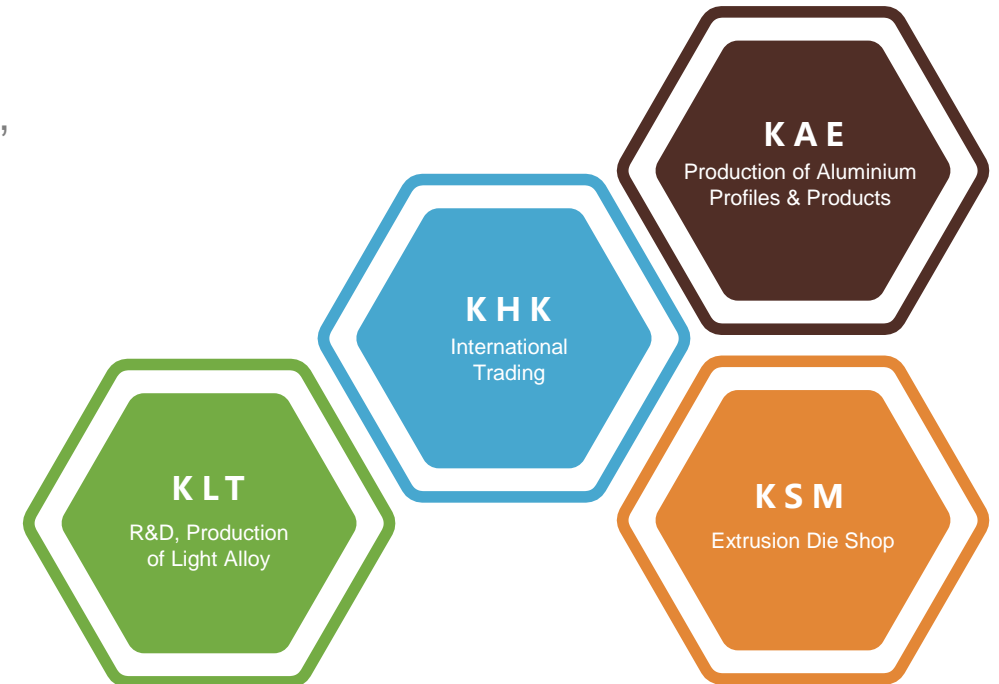
- Introduction
- Milestones
- Sustainability
- Certification
- Market Distribution
- Products & Applications  
(Building & Construction, 3C Electronics, Automotive, Transportation, Life Improvement, Industrial)
- Production Base (KAE, KLT)
- Production Capacity  
(Die shop, Billet Casting, Extrusion Profile, Surface Finishing, Precision Machining, Automotive Parts Production, Quality Control, Research & Development)

# Introduction

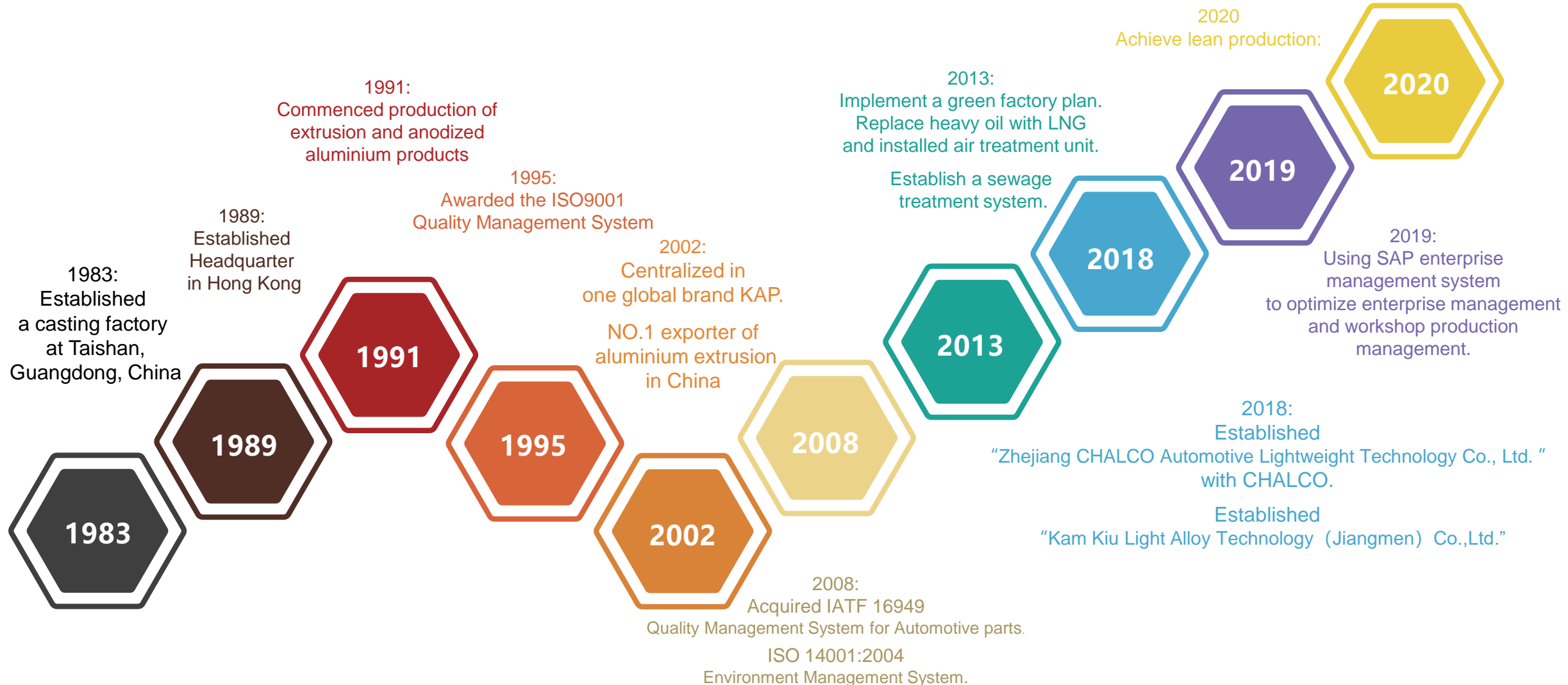


**Kam Kiu Aluminium Group (KAP)** is a leading aluminium extruder with a range of applications from consumer electronics, automotive, aerospace, marine, renewable energy system and to architectural projects. With 30+ years of expertise through billet casting, extrusion, die design, surface treatments to precision machining, KAP is committed to provide one stop solution to the market.

To provide technological support in aluminium products development, KAP devotes to research and development with capabilities proven to enhanced profiles performance solution and strengthen customers' product competitiveness.



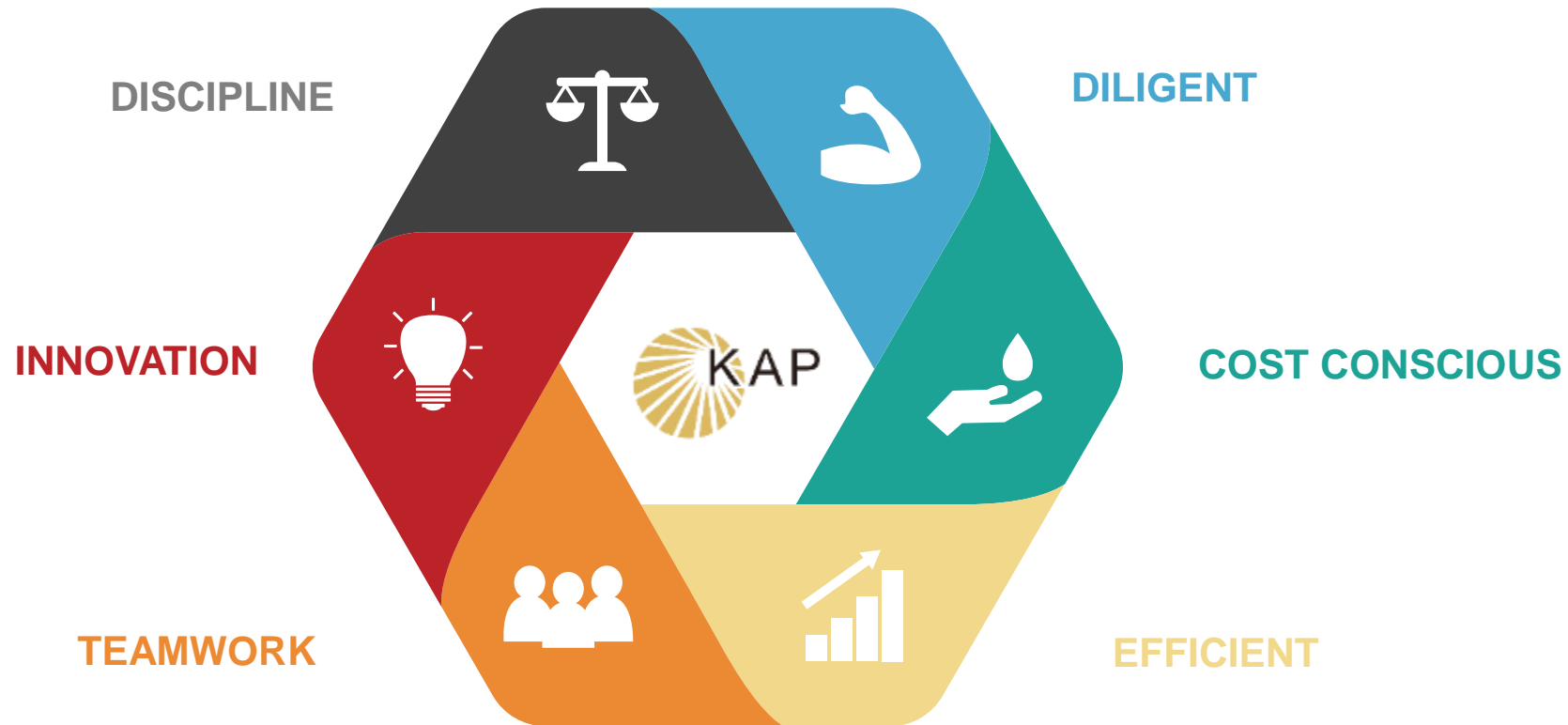
# Milestones







# Core Values



# Our Mission



**Grateful** heart  
Responsibility for  
employees and society

With an  
**excellence** team  
Build a solid foundation  
for the company



**Diversified** products  
Create greater value  
for customers



**Environmentally friendly**  
aluminum profiles  
Contribute to the  
earth's ecology



**Innovative**  
research  
technology  
Powering industry progress



# Sustainability



## Environmental Protection

"Protect our Home" are not just empty phrases, Environmental protection has a long tradition at KAP, protect our home is our commitment to our ancestors.

Because,  
we were bore here,  
we were live here,  
we were started here,

**This is our home... Taishan, China, Earth.**



## Recycling

Recycling and the associated sustainable production of KAP products has become an important issue for the future.

We are convinced today that energy efficiency and resource-conserving production methods promote new technologies and processes.

Uniting the whole value-added chain under one roof embodies our wish for environmental protection.

**The aluminum products we produce every day will be the "Recycled aluminum."**



## Occupational Health and Safety (OHS)

There is hardly anything more important than returning home safe and healthy at the end of a working day.

That is why we at KAP are convinced that there is never a more urgent concern than the safety and health of our employees.

Precautionary measures, regularly evaluated risk assessments and our inter-site health and safety policy are key steps in this direction.

**As a result, we have succeeded in continuously reducing the number of accidents at work.**



## Social Responsibility

KAP has been based in the local community for more than 30 years.

Thousands of KAP employees have started to work in since young.

KAP is not only a local production enterprise,

KAP is also affecting the local community and the happiness of thousands of families at hometown and abroad.

KAP is committed to promoting the sustainable development of local communities and actively participating in activities such as poverty alleviation, education, medical care and disaster relief.



**We want to make "happiness" become the corporate culture of KAP.**



# Certification



ISO 9001:2015

Quality Management System



IATF 16949:2016

Quality Management System for Automotive parts



ISO 14001:2015  
GB/T 24001:2016

Environment Management System



ISO 45001:2018

Occupational Health and Safety Management Systems



Classification for Maritime Products

Norway DNV, Germany GL, France BV, US ABS, China CCS



# Certification



ISO/TS 22163:2017

Railway Quality Management System

SCS Global Services does hereby certify that an independent assessment has been conducted on behalf of:

## Taishan City KAM KIU Aluminium Extrusion Co., Ltd

Shiqiao Industrial Zone, Dajiang County, Tai Shan, Guangdong, China

For the following product(s):

### 6063GR Aluminum Billet

The product(s) meet(s) all of the necessary qualifications to be certified for the following claim(s):

#### SCS RECYCLED CONTENT CERTIFIED

Conforms to SCS Recycled Content Standard V7-0 for a **100% Pre-Consumer Recycled Aluminum content**. The material quantification and mass-balance calculations are completed on a dry-weight basis.

Registration # SCS-RC-06425

Valid from: September 21, 2020 to September 20, 2021

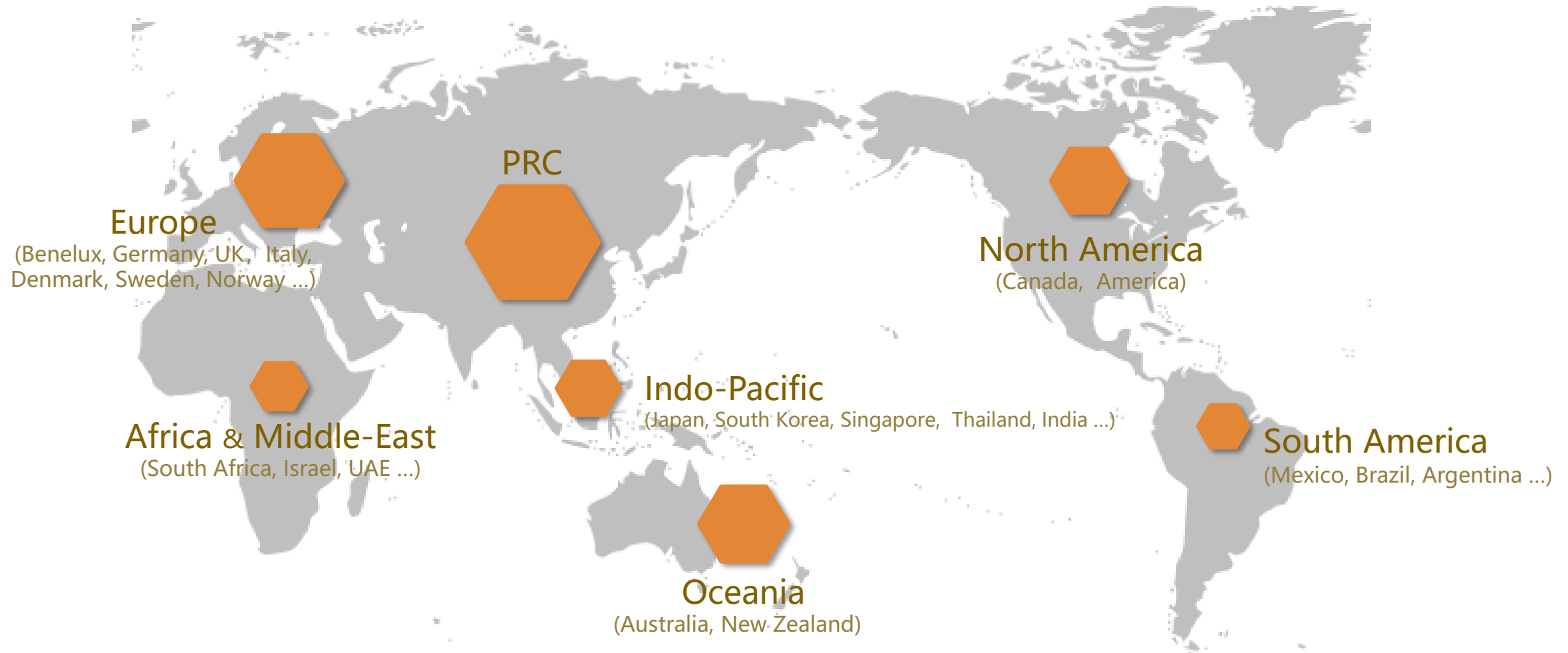


Stanley Mathuram, PE, Vice President

2000 Powell Street, Ste. 600, Emeryville, CA 94608 USA

SCS Recycled aluminum product certification

# Distribution by Region



# Products & Applications



Building & Construction

Life Improvement

**Architecture Profiles**  
(15%)

Widely used in the following industries:  
Curtain wall, Doors & Windows,  
Construction Work  
Home settings, Shower Enclosure...

3C Electronics

Automotive

Transportation

Industrial

**Industrial Profiles**  
(85%)

Widely used in the following industries:  
3C Electronics,  
Auto Parts, Transportation,  
Industrial Production,  
Medical Equipment...



# Building & Construction



For more than 30 years, KAP has been providing high-quality aluminum profiles for internationally renowned door and window brands, and providing curtain wall profiles and fabricated aluminum panel to landmark buildings in major cities around the world.





# 3C Electronics



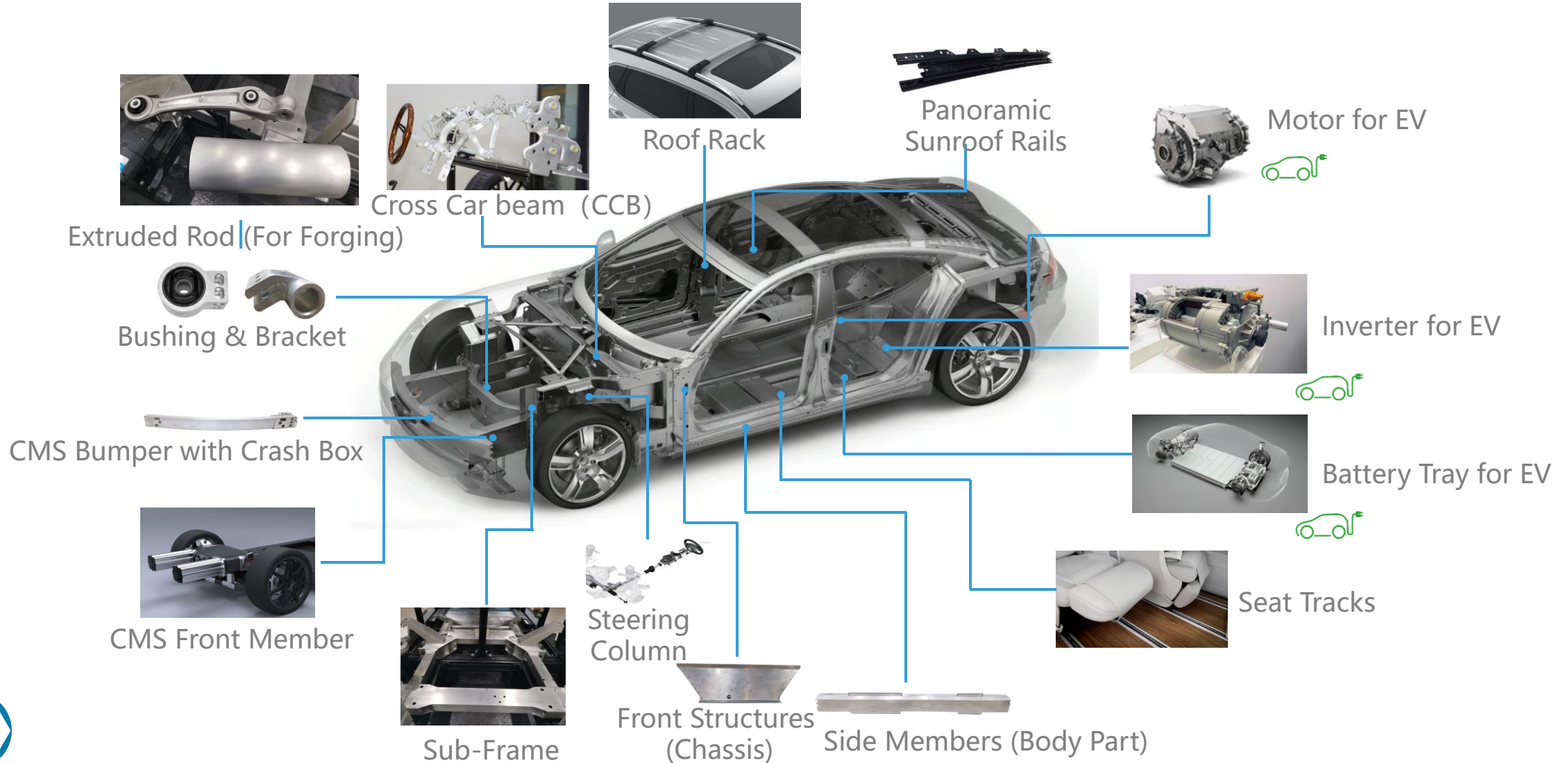
**KAP** has been focusing on aluminum alloy R&D and extrusion processing,

In the world's top ten mobile phone brands, the application of high-strength 7XXX series for mobile phone, The market share of KAP more than 70%.

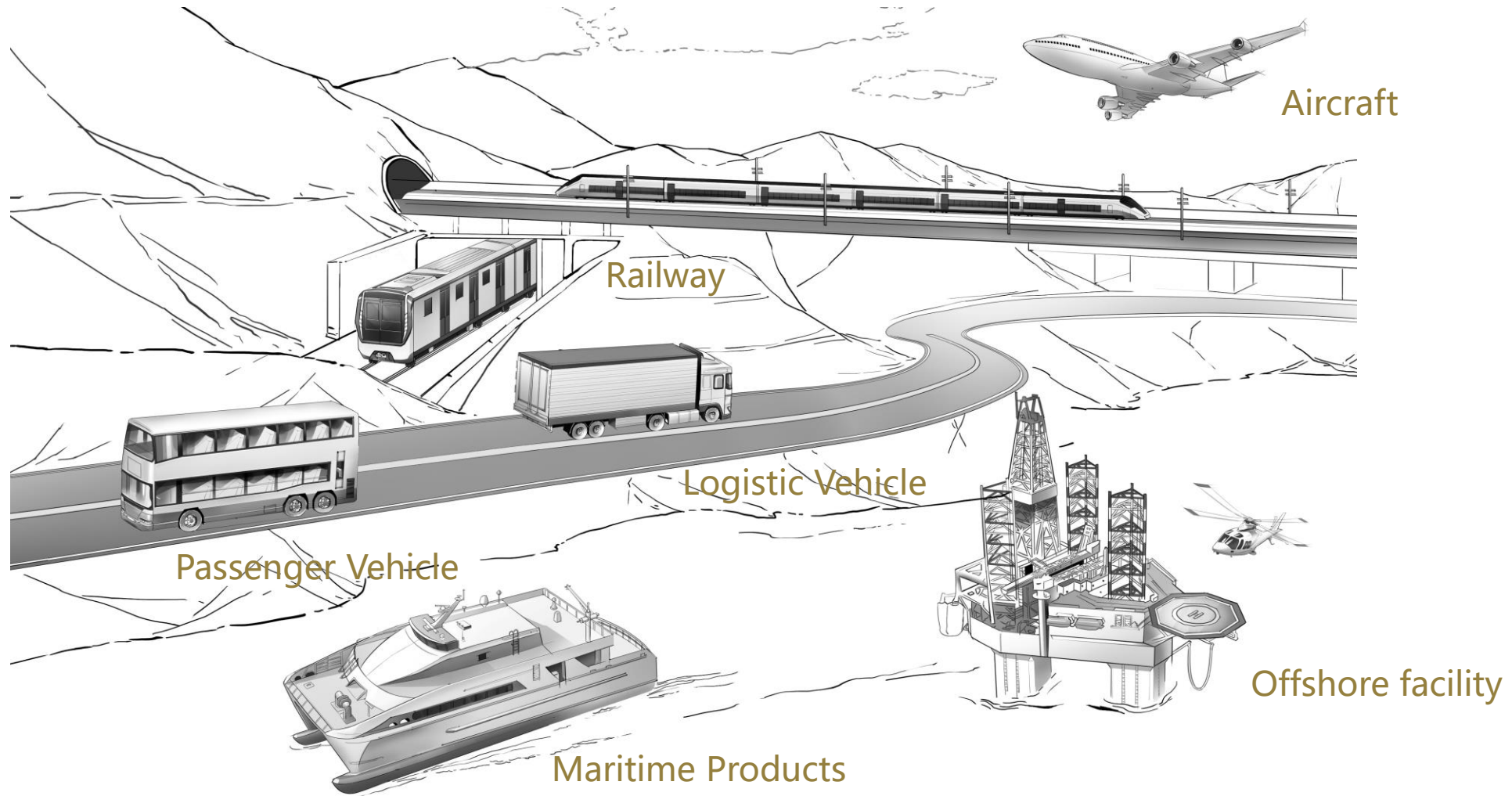




# Automotive



# Transportation



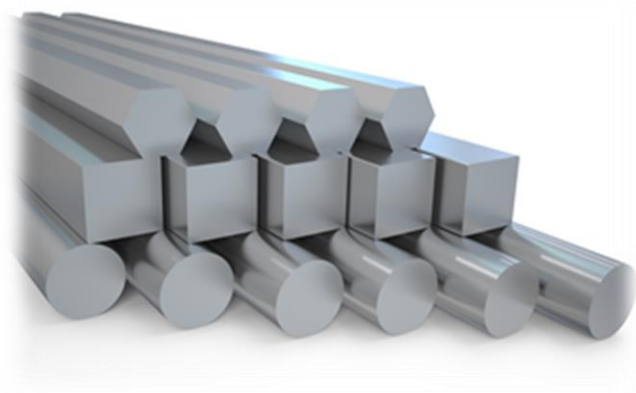
# Life Improvement



FabricatorPool windows Australia  
[www.poolwindows.com.au](http://www.poolwindows.com.au)



# Industrial



Rod & Bar



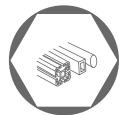
Industrial Profiles



Standard Profiles



Assembly Technology Profiles



# Production Base



## Taishan City Kam Kiu Aluminium Extrusion Co., Ltd. (KAE)

- Location: Taishan, Guangdong, China.
- Establishment date: Year 1983
- Area: 389,000sqm.
- Number of employees: ~2500.





# Production Base



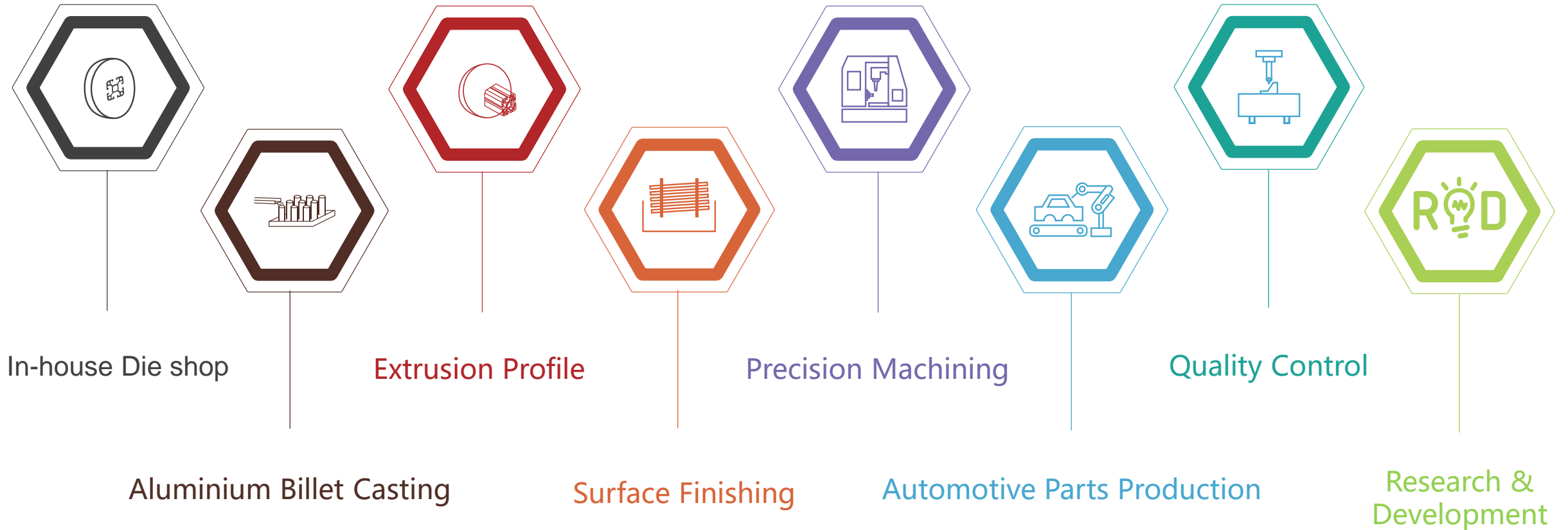
## Kam Kiu Light Metal Technology Co., Ltd. (KLT)

- Location: Taishan, Guangdong, China.
- Establishment date: Year 2018
- Area: 166,500sqm.
- Number of employees: ~800.





# Production Capacity



In-house Die shop

Extrusion Profile

Precision Machining

Quality Control

Aluminium Billet Casting

Surface Finishing

Automotive Parts Production

Research & Development

# In-house Die shop



**KAP** is staffed with a professional team of specialists in tool and die design. They are engaged in developing high quality dies with 3D design and simulation system. Our production of dies are characterized by precision, strength and abrasive resistance, these are complemented by CNC machining centers, vacuumed heat-treated ovens, controlled multi-atmosphere and nitriding ovens, which enhance accuracy and effectiveness in the downstream extrusion production process.



# Aluminium Billet Casting

**KAP** uses high quality primary aluminum materials with a purity of over 99.7%.

It can produce 1xxx, 2xxx, 3xxx, 5xxx, 6xxx, 7xxx series aluminum alloy billet in strict accordance with international standards.

In addition, special aluminum alloy billet can be ordered according to customer requirements.

All equipment uses LNG and is equipped with gas treatment equipment to actively achieve energy saving and emission reduction.

Production equipment includes:

- Fully automatic ultrasonic aluminum rod flaw detector
- Online dehydrogenation, tubular filtration
- Aluminum alloy melting furnace 16 sets

Volume	35T	30T	25T	20T
Quantity	1	4	9	2



# Extrusion Profile



**KAP** possesses 35 extrusion presses equipped with power frequency cascading furnace, online water quenching system, annealing furnace, quenching furnace. The annual output is 130,000 tons.

Double Action Indirect Presses:

Press size (US Tons)	2800	1000
Quantity	2	2

Direct Extrusion Presses:

Press size (US Tons)	6180	3680	2800	2500	1800	1250	1100	880	550
Quantity	2	1	5	6	3	1	4	5	4





# Surface Finishing

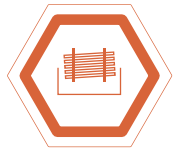


**KAP** has a number of surface treatment production lines with a central sewage treatment system.

The products are in line with international standards and are recognized by Japanese and European customers.

Production equipment includes:

- Anodizing production line
- Anodizing coloring line
- Mechanical and chemical polishing production line
- Horizontal powder coating production line
- Horizontal wet painting production line
- Vertical wet painting production line



# Precision Machining



**KAP** is committed to providing customers with one-stop aluminum production services.

A variety of automation equipment is available to meet customers' requirements for aluminum processing and product assembly.

Production equipment includes:

- Automatic sawing machine
- Multi-function CNC milling machine
- CNC punch, mechanical punch
- 3-axis CNC machining center
- Tube bending machine
- Welding production line
- CNC precision processing equipment





# Automotive Parts Production



**KAP** established the “Auto Parts Production Plant” in 2017.  
In order to serve the auto parts customers more professionally.

The factory effectively implements the automotive industry  
<IATF16949 automotive product quality management system>.

Industrial automation and data visualization management will be  
implemented in the factory.

At that time, the production data real-time display system  
will dock the new SAP management system of KAP.



# Quality Control



**KAP** has always adhered to the principle of quality first.

Through the reasonable planning before production, production process control, quality control, to ensure that product quality continues to be stable.

Testing equipment includes:

- Alloy composition spectrum analyser
- Optical profile inspection system
- Mechanical performance tester
- High magnification metallographic analysis microscopy
- X-ray detector
- Ultrasonic detector
- CMM detection equipment
- UV and climate simulation tester
- Impact tester
- Coating thickness gauge
- Coating gloss meter



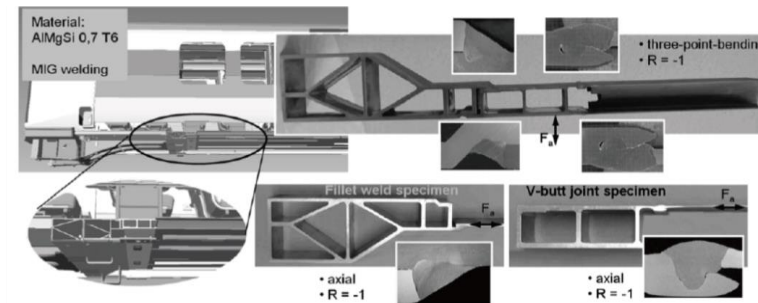
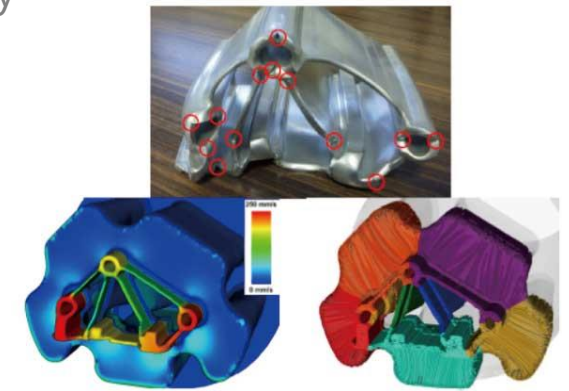
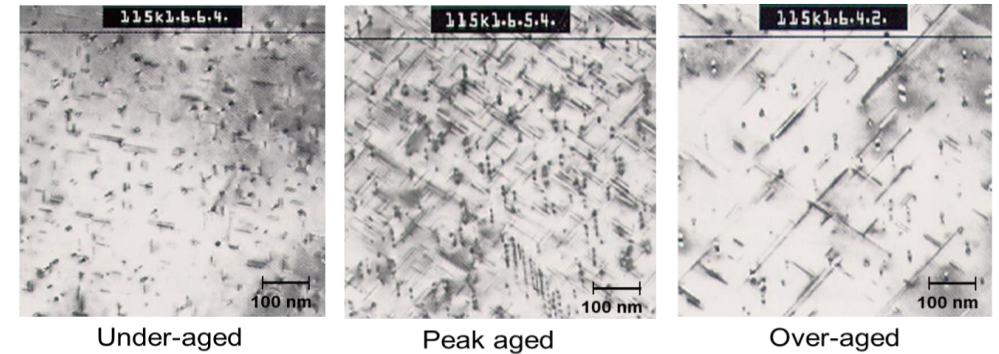
# Research & Development



**R&D** of new materials and new technologies to support sustainable development.

R&D topics include:

- Developed high strength, high fatigue resistance, high welding performance, new aluminum alloy
- Development of design, simulation and production of complex section aluminum profiles
- Effect of heat treatment process on connection performance crash performance
- The effect of the joining process on the performance of the assembly
- Molding process (MIG \ FSW \ hydraulic expansion type)
- Aluminum alloy automotive parts  
(collision management system, steering system, sub-frame, battery tray and chassis)







Kam Kiu Aluminium Products Group Limited.

**Thank you very much !**